



# THERMO-KOOL UNUSUAL PLACES SERIES

---

A visual guide into unusual walk-ins manufactured over half a century, and how Thermo-Kool's expert craftsmen raised the bar on conquering the curve.

# THE ART OF ANGULAR CONSTRUCTION

## THE SQUARE ISSUE:

Since the dawn of time, man has endeavored to create diversity amongst shapes. Man created the wheel, a circular shape without corners that made travel easier. The Egyptians built the pyramids, a triangle, whose construction left the world in awe. The Americans sewed the five-pointed star on their flag and built the five-sided pentagon. And while you might like to put a Stop to this rant, well, that particular sign is an octagon.

With so many wonderful shapes throughout the ages, why, then, is almost every gadget in the kitchen square? The microwave, the oven, the toaster... all square. Though this can be a working design, it isn't always the optimal choice for maximizing results. This is the issue most foodservice owners find themselves facing when it comes to cold storage. So, do you sacrifice precious storage for a shape that doesn't fit your space? Or is there a better way?



## THE SOLUTION:

The history of refrigeration spans the length of time, with people learning to use nature to their advantage. They created cold cellars and 'icehouses' during the winter to preserve their game and harvest. The idea of capitalizing on this early concept was considered in the mid-1700s, but ultimately wasn't a possibility until John Gorrie invented the first cooling unit in 1842. It was designed as a treatment for the Yellow Fever, but the fully realized concept found its way into modern households as the refrigerator we all know and utilize today.

After WWII, refrigeration production hit its 'boom' period and walk-in refrigeration took off. Mass cold storage units became a necessity for restaurants, schools, hospitals, and other hospitality industries, and as demand grew, the need for more storage space came with it. But a square unit can only allow so much space. With the need to utilize available space that wasn't just rectangular in shape, Thermo-Kool devised a way to meet those needs with one, simple solution: *Customization*.

With Thermo-Kool customization, any space is the perfect fit. We manufacture each panel in 1" increments, meaning designing around corners, pillars, and steps to maximum your unique space is a feature that comes standard. And with each panel equipped with interlocking mechanisms, your walk-in is flexible for your growing business and never requires cutting and pasting at the jobsite, which can quickly cause your installation fees to increase.

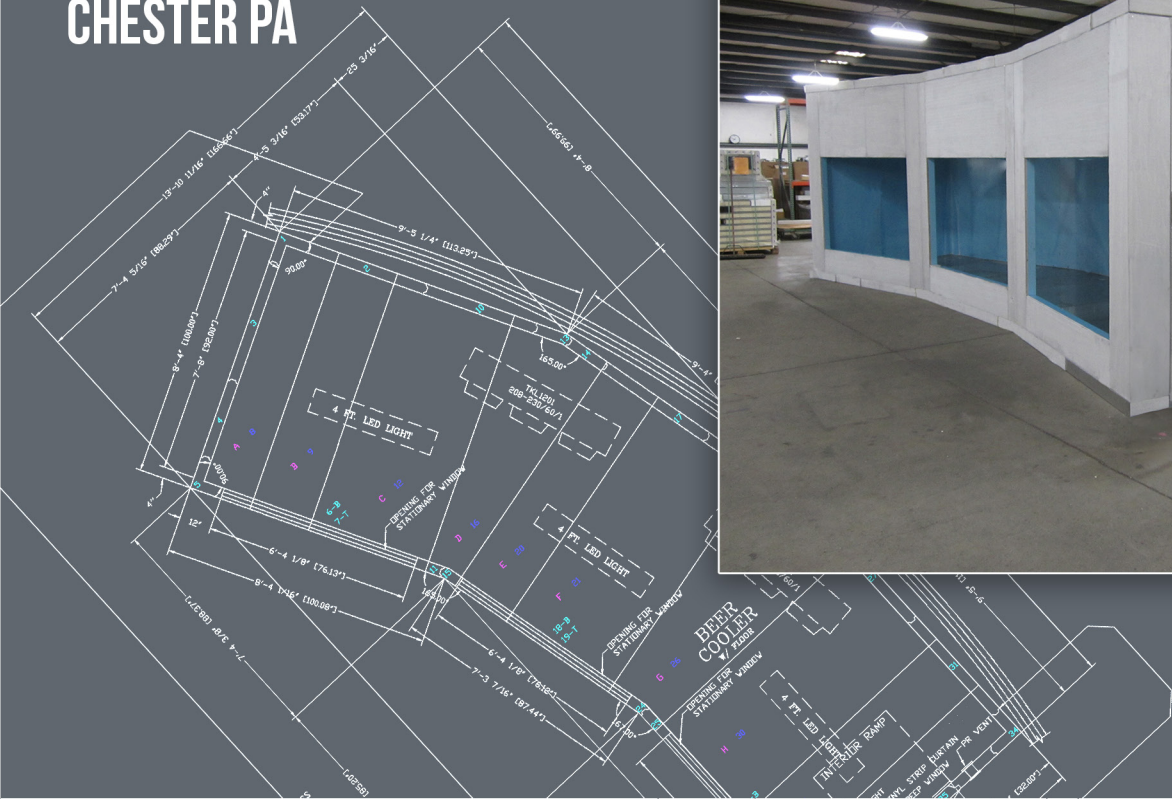
But don't take our word for it! Here are some examples of Unusual Installs that don't quite fit your standard mold.

I like big angles,  
and I cannot lie.





HARRAH'S CHESTER  
BARLEY CUE  
CHESTER PA



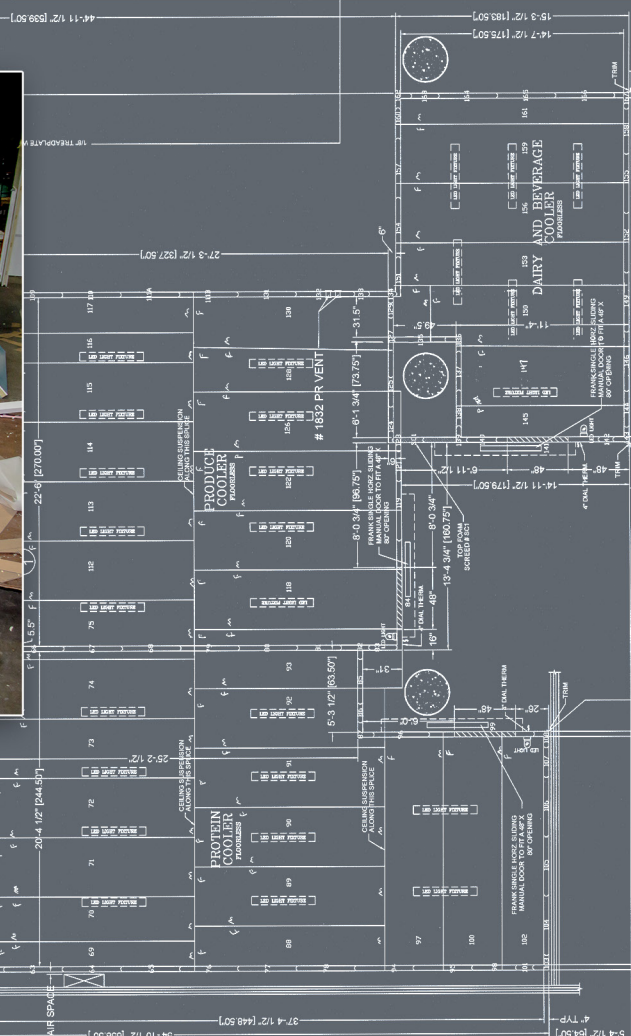
YARDHOUSE  
HANOVER MD





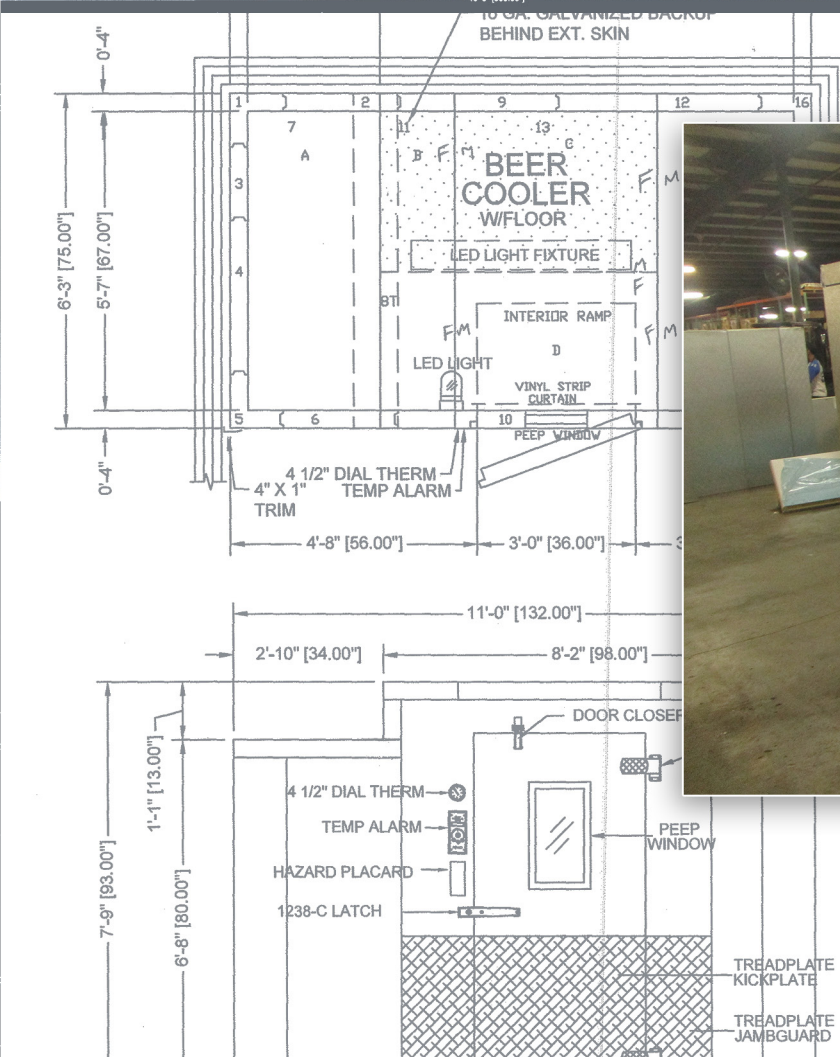
# DEACON'S NEW SOUTH

## NASHVILLE TN



**DUKE UNIVERSITY**  
**DURHAM NC**

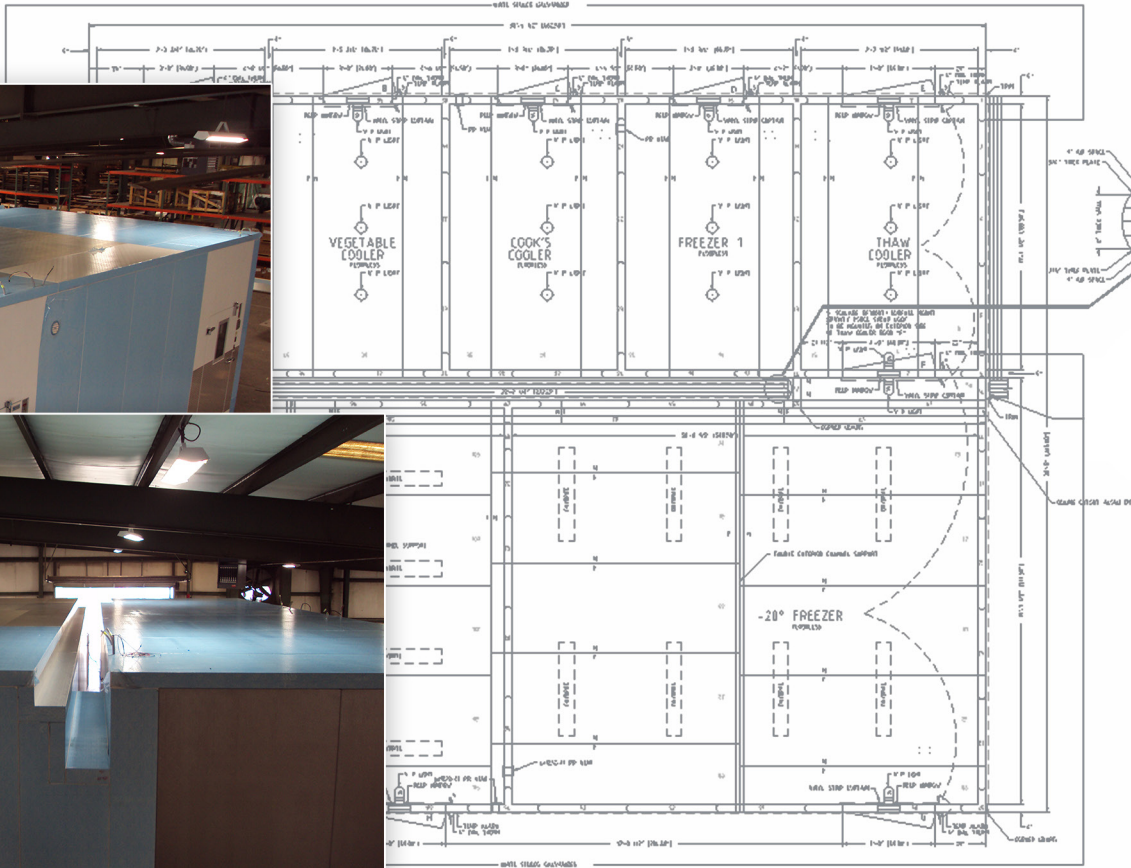






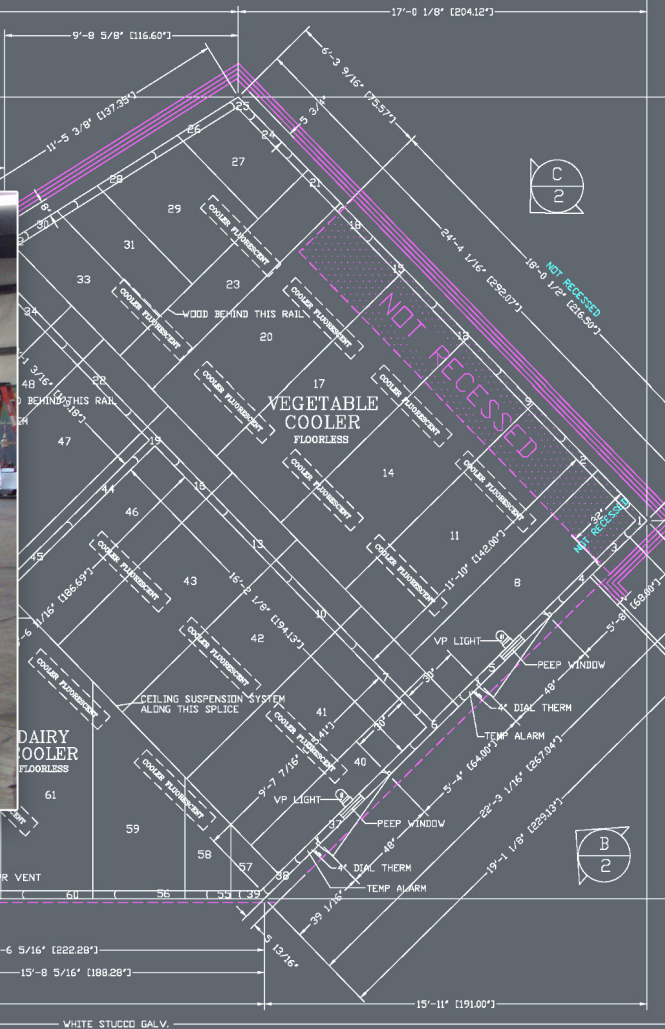
# NEW RIVER VALLEY REGIONAL JAIL

## DUBLIN VA

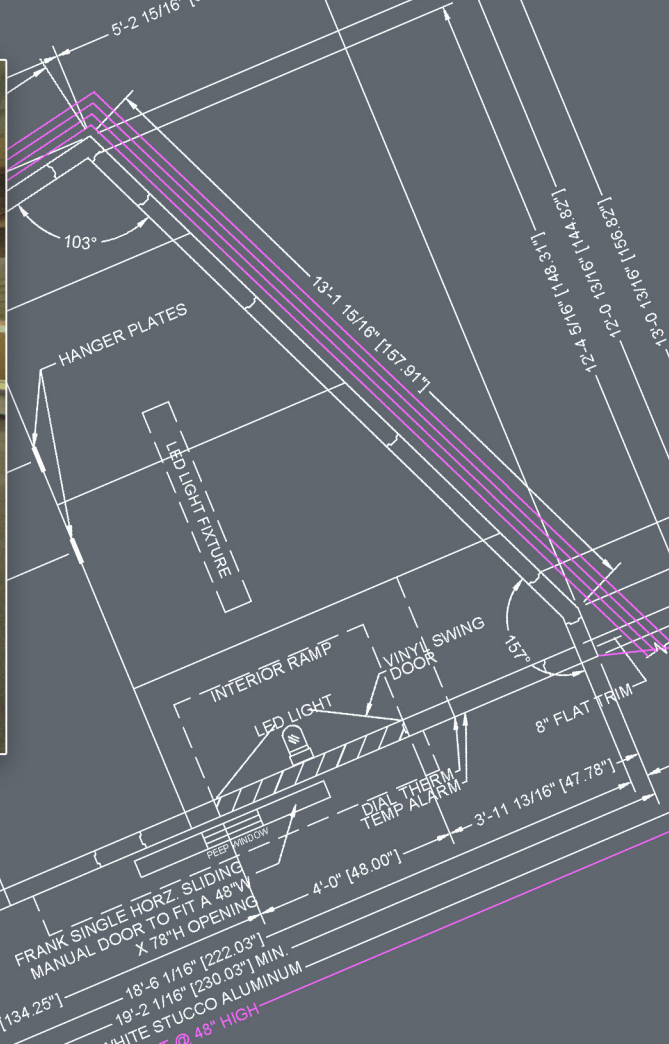


# HAMPTON UNIVERSITY

## HAMPTON VA



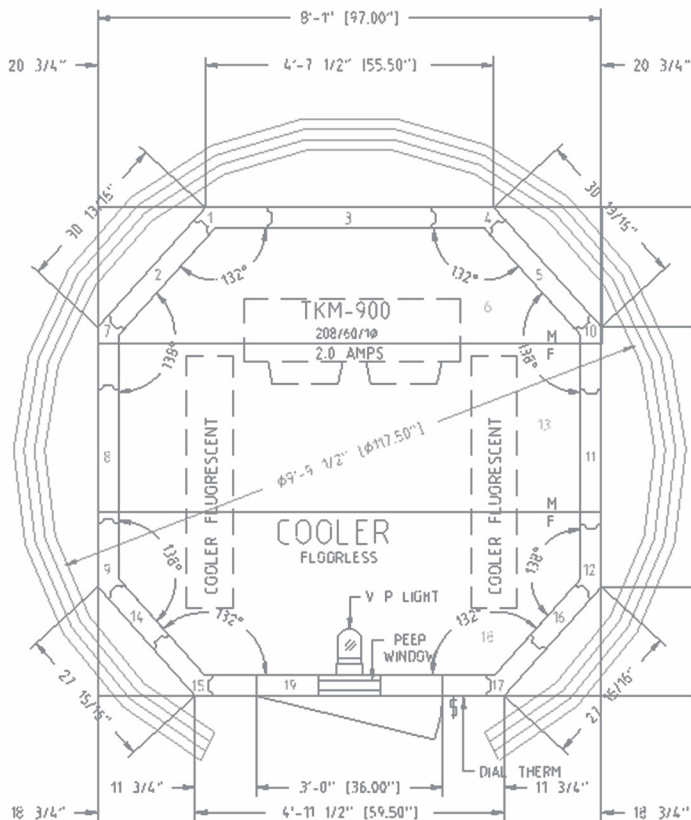




**CITI FIELD METS STADIUM**  
**DIAMOND CLUB**  
 NEW YORK NY

# WINSTAR CASINO

## THACKERVILLE OK





[WWW.THERMOKOOL.COM](http://WWW.THERMOKOOL.COM)



800-647-7074



[SALES@THERMOKOOL.COM](mailto:SALES@THERMOKOOL.COM)



723 EAST 21<sup>ST</sup> STREET  
LAUREL MS 39440